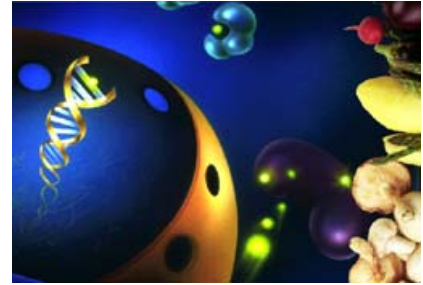
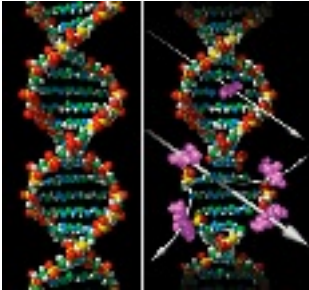




Texas A&M University
Ph.D. Training Program in Space Life Sciences
Sponsored by the National Space Biomedical Research Institute (NSBRI)
<http://SLSGraduateProgram.tamu.edu>



Earn a **Certificate in Space Life Sciences** noted on your transcript while obtaining your doctoral degree training at Texas A&M University in Kinesiology, Nuclear Engineering (Health Physics), Nutrition or a M.D./Ph.D. or Ph.D. in Medical Sciences from the Texas A&M University Health Sciences Center Graduate School of Biomedical Sciences.

The overall goal of the Training Program in Space Life Sciences (SLS) is to develop a cadre of scientists capable of performing the work necessary to solve the most critical problems in space life sciences that limit long duration space flight such as: 1) bone loss, 2) muscle wasting, 3) health effects of cosmic radiation, and 4) changes in metabolism. In addition, students will gain the specific training in either nutritional and/or exercise physiology countermeasures against these major biological problems.

Trainees who complete the program will have a solid grounding in research, teaching and service to be successful in careers in academia, with NASA, private industry partners in the space initiative, and/or other public or private organizations involved in NASA's space exploration endeavors.

Trainees will:

- 1) Participate in special summer rotations at NASA Johnson Space Center, the NASA bed rest facility at the University of Texas Medical Branch and/or the Brookhaven National Laboratory Space Radiation Summer School.
- 2) Defend a dissertation related to space life sciences.
- 3) Take 4 courses in the area of space life sciences.
- 4) Participate in educational outreach activities.

**Two fellowships are awarded each year that include a \$20,000 stipend,
tuition waivers and meeting travel expenses for 2 years.**

For more information please contact: Chelsea Bishop, Program Coordinator
Texas A&M University, 213 Kleberg Center, 2253 TAMU
College Station, TX 77843-2253
Phone: 979-845-0850 Fax: 979-862-1862
E-Mail: CLBishop@tamu.edu